

Pioneering for You

HVAC OEM Competence Centre

Wilo-Para Ku^{**}-^{***}/6-43/SC Datasheet



Wilo-Para Ku**-***/6-43/SC

Heating



Field of application



Heating

Para Ku 15-130 /6-43/SC-12

WILO

High Efficiency pump for heating application

Ku	Inline Composite OEM pump housing
15	Threaded connection DN15 (20, 25: also available)
6	6,3 = delivery head in [m] at Q = 0 m ³ /h
43	Max power consumption
SC	The pump is controlled by Push button technology SC = ΔP-v, ΔP-c, constant speed I, II, III
12	Control box orientation 12 o'clock (3, 6, 9 o'clock: also available)

Approved fluids (other fluids on request)	Heating water (in accordance with VDI 2035) Water-glycol mixtures (max. 1:1; above 20% admixture, the pumping data must be checked)
--	--

Power

Energy Efficiency Index (EEI)	≤ 0.20
Max. delivery head	6,3 m
Max. volume flow	2,6 m ³ /h

Permitted field of application

Temperature range for applications in HVAC systems at max. ambient temperature. Limit values for continuous operation at maximum rated power	Of 58°C = 0 to 100°C Of 62°C = 0 to 90°C Of 66°C = 0 to 80°C Of 71°C = 0 to 70°C
Maximum static pressure	PN6

Electrical connection

Mains connection	1~230 V +10%/-15%, 50/60 Hz (IEC 60038 standard voltage)
------------------	--

Motor/electronics

Low voltage directive	2006/95/EC Conform
Electromagnetic compatibility	EN 61800-3
Emitted interference	EN 61000-6-3 EN 61000-6-4
Interference resistance	EN 61000-6-2 EN 61000-6-1
Protection class	IPx4D
Insulation class	F
RoHS / REACH	Compliant but not submitted

Minimum suction head at suction port to avoid cavitation at water pumping temperature

Minimum suction head at 50/95°C	0.5/4.5 m
---------------------------------	-----------

Motor data

Para	Speed	Power consumption 1-230 V	Current at 1-230 V	Motor protection
	n	P1	I	-
	rpm	W	A	-
Ku 6/ SC	2430 - 4300	3-43	0,04-0.39	Integrated

Materials

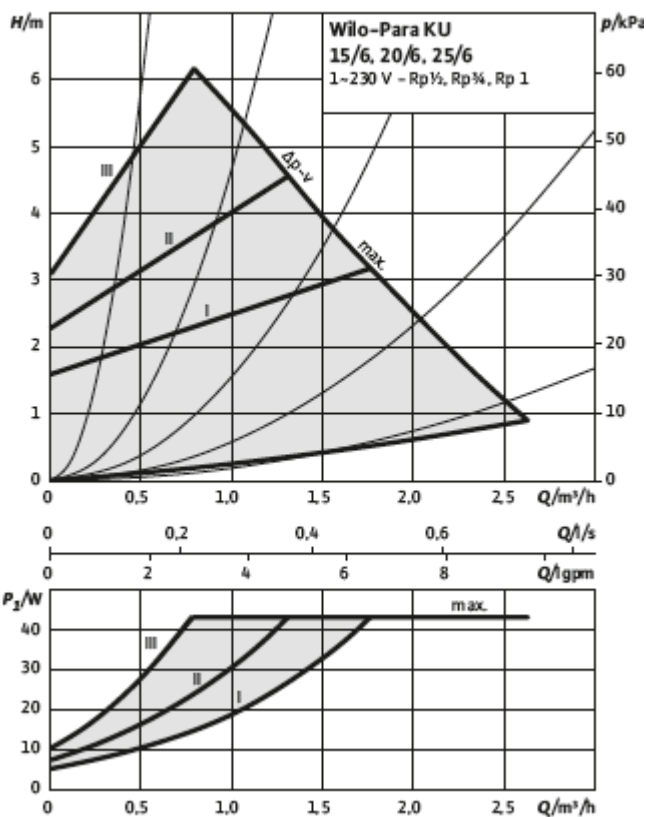
Para	Pump housing	Impeller	Pump shaft	Bearing
Ku 6/ SC	PA6.6 composite with GF 30%	PP composite with GF 40%	Stainless steel	Carbon, metal impregnated

Hydraulic operational area

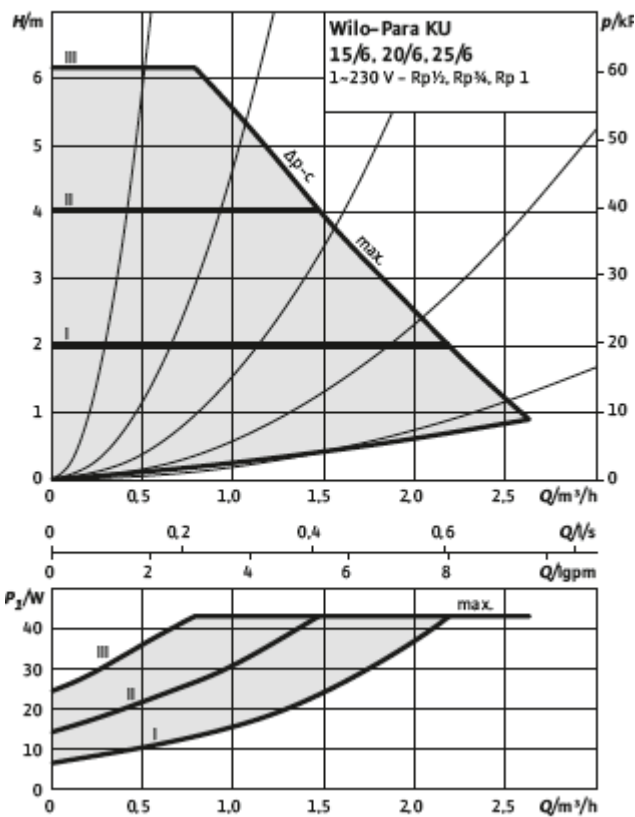


Heating

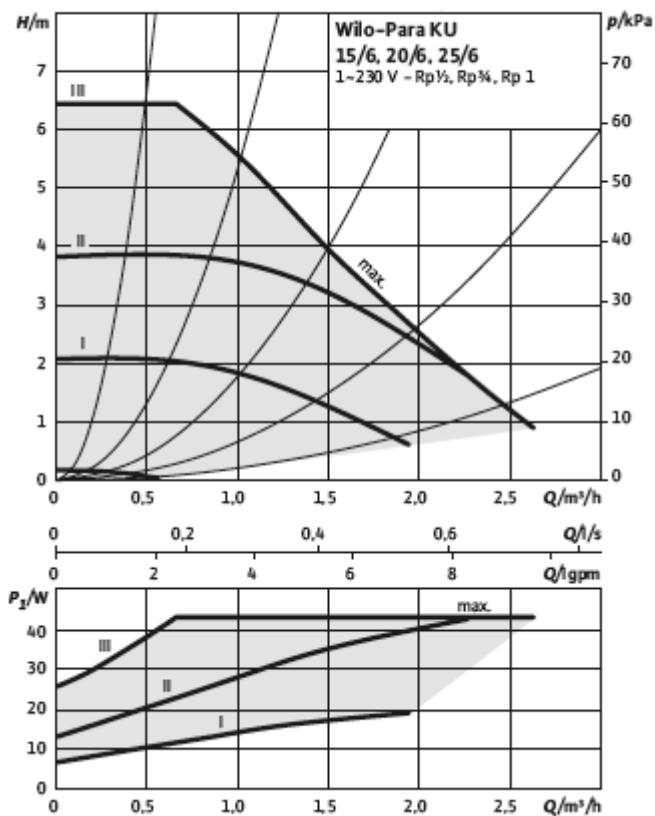
$\Delta p-v$ (variable)



$\Delta p-c$ (constant)



Constant speed I, II, III



Datasheet Wilo-Para **/6 SC 04/07

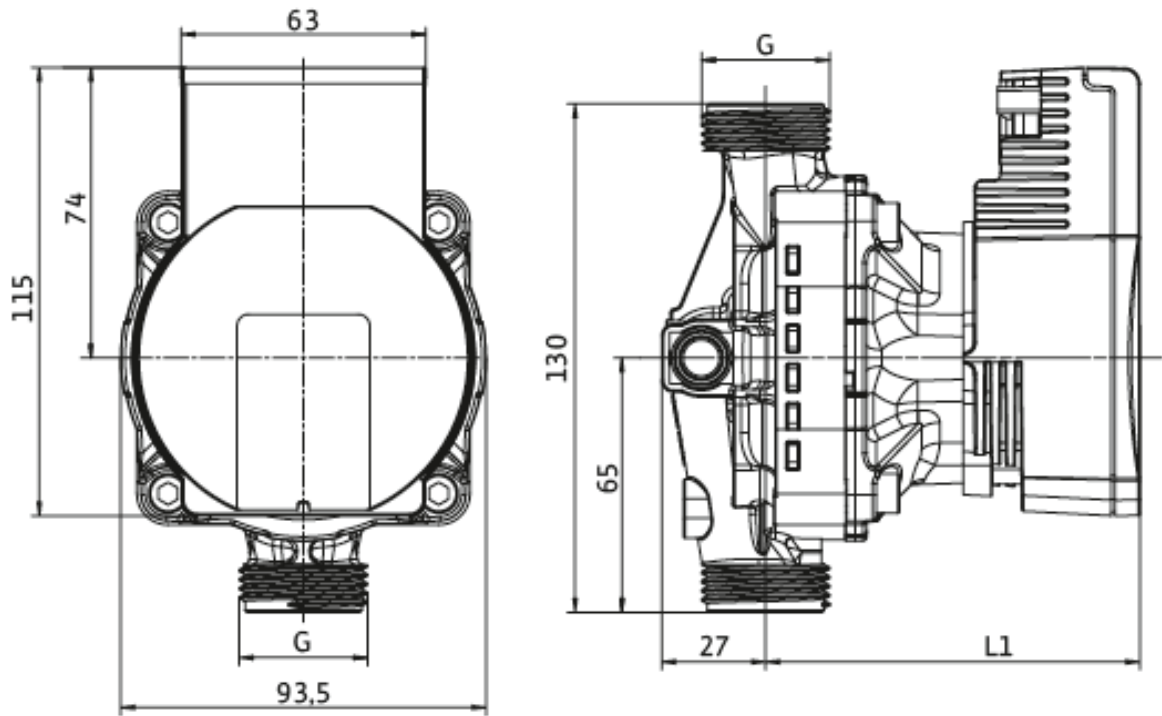
Hydraulic operational area

Standard factory setting



Dimensions

Wilo-Para KU



Heating

Technical data

Designation	Para KU15-130/6-43/SC	Para KU15-130/7-50/SC	Para KU15-130/8-75/SC
Threaded pipe union		Rp 1/2	
Thread		G 1	
Overall length l_o		130 mm	
Weight approx. m		0.9 kg	1.1 kg
Dimensions $L1$		96 mm	108 mm

Technical data

Designation	Para KU20-130/6-43/SC	Para KU20-130/7-50/SC	Para KU20-130/8-75/SC
Threaded pipe union		Rp 3/4	
Thread		G 1 1/4	
Overall length l_o		130 mm	
Weight approx. m		0.9 kg	1.1 kg
Dimensions $L1$		96 mm	108 mm

Technical data

Designation	Para KU25-130/6-43/SC	Para KU25-130/7-50/SC	Para KU25-130/8-75/SC
Threaded pipe union		Rp 1	
Thread		G 1 1/2	
Overall length l_o		130 mm	
Weight approx. m		0.9 kg	1.1 kg
Dimensions $L1$		96 mm	108 mm



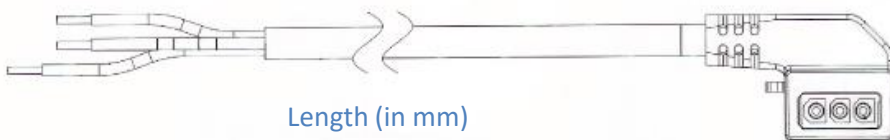
Electrical Power connections

Integrated Molex 3-way connector

Heating



Accessories power cable



Available mains cables

Overmoulded power connector with brass end splices and type Facon PR260 on terminal box side (disconnection possible)

cable length 500mm	4530966
cable length 1000mm	4524578
cable length 1500mm	4530763
cable length 2000mm	4527857

Not assembled



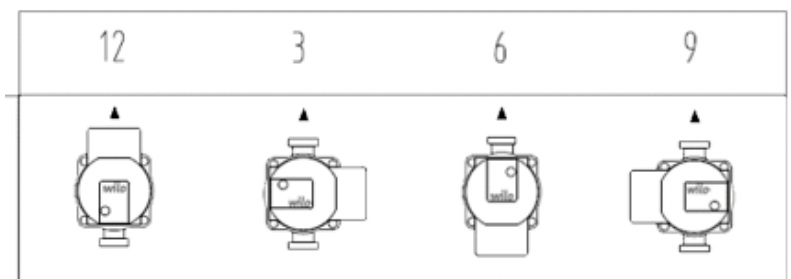
Molex 3 ways



WS8

Electrical Box orientation

▲ Flow direction



wilo

Pioneering for You

WILO Group – Strategic Business Unit OEM

WILO Intec
50 av. Casella
18700 - Aubigny sur Nère
France
T +33 2 48 81 62 62
information@wilointec.com
www.wilo-oem.com

